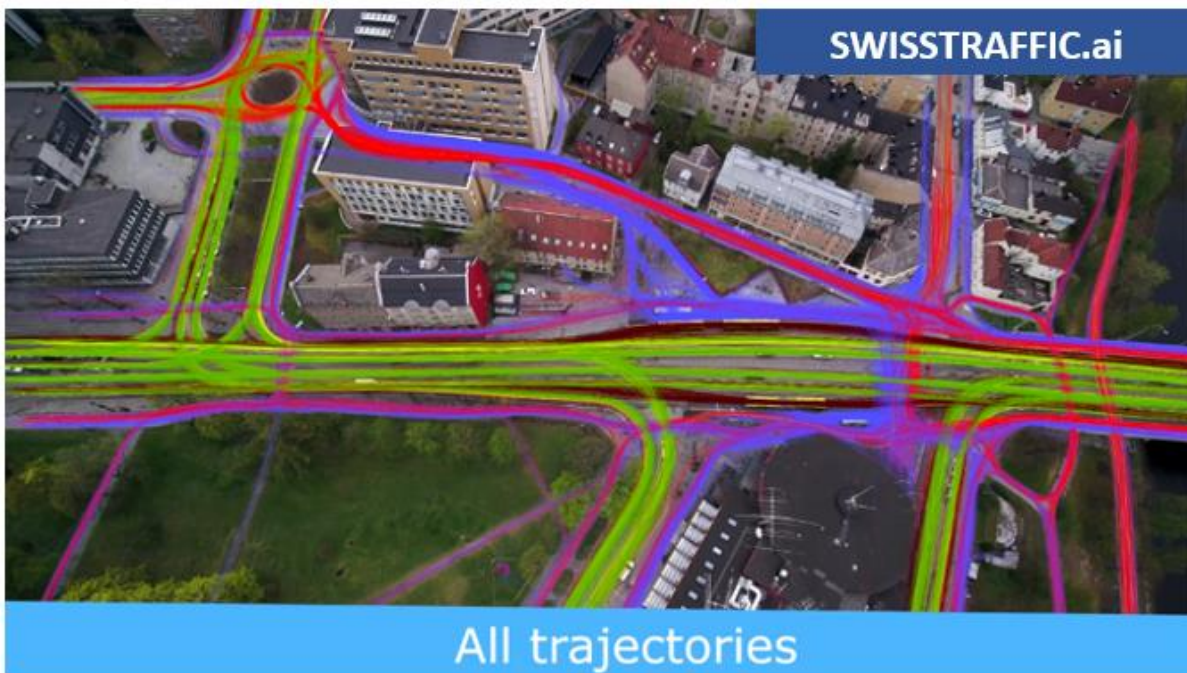




How to make a visual export from SWISSTRAFFIC.ai Viewer?

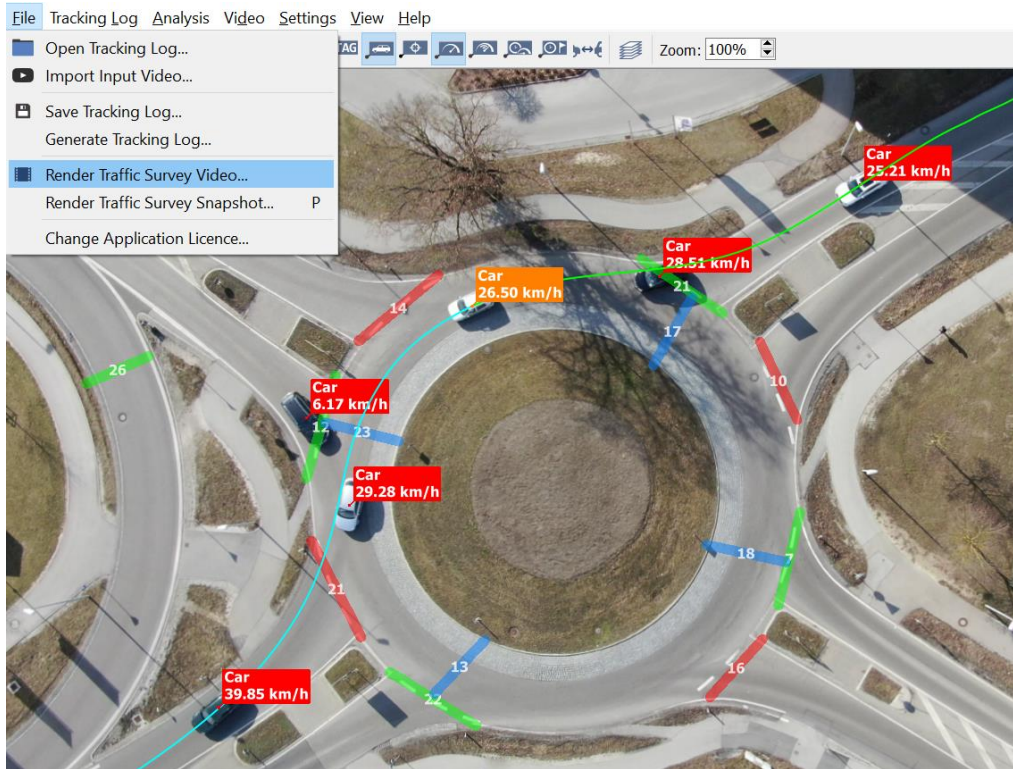
Present your visualized data easily by exported picture or the video!

Do you want to **present** your data to colleagues and do not know how to make an export out of your video? Set your own **object flags**, gates, traffic **or** action regions or visualize **speed of car by colour-scale trajectory**, use speed, acceleration **or other** heatmaps to make your message clear. With SWISSTRAFFIC.ai you can decide whether you want to export your traffic survey to simple snapshot or export video based on set parameters.

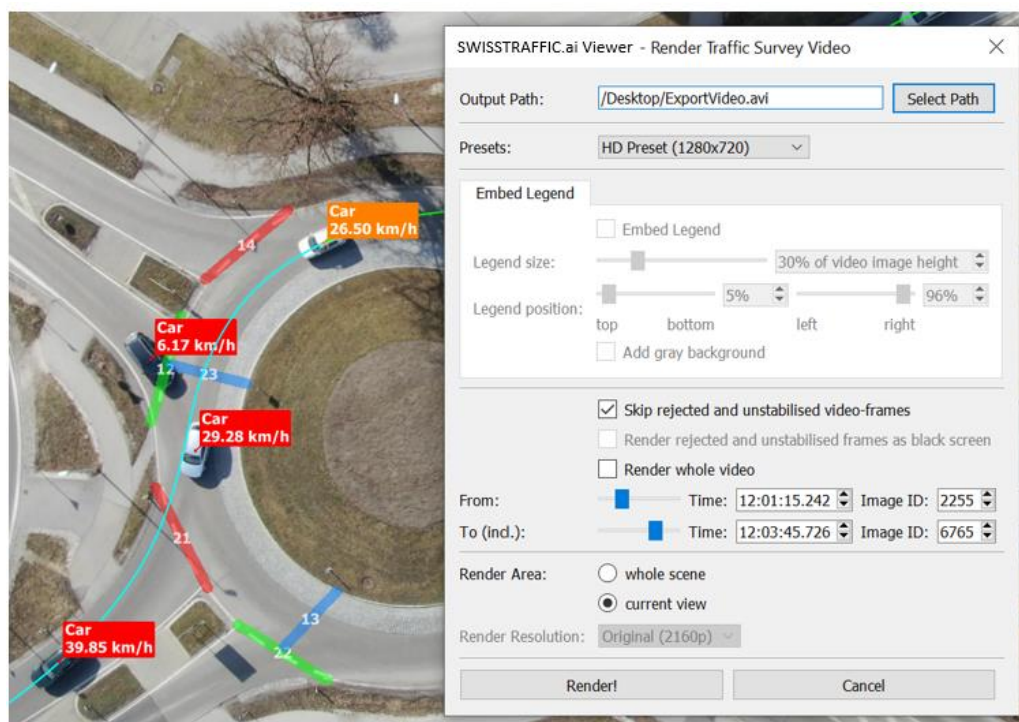


Before you create snapshot video export, make sure that **you have visualized all data that you want to see**. For more information see an article **how to visualize data** in your video to be sure you did not miss anything. Once you can see your gates, traffic regions or heatmaps, you can start with the export.

You can create a **snapshot** of the current view by clicking the File - Export Traffic Survey Snapshot or by pressing the P key on the keyboard.



Video export can be done in File menu - Export Traffic Survey Video. In new window set Output Path, quality of the video, duration of the video (you can export the whole video or only part of it) and export Area. Once you click Export! video creation starts.



Each video export includes the logo SWISSTRAFFIC.ai. This logo is not removable. You cannot exchange the logo for your own.

