



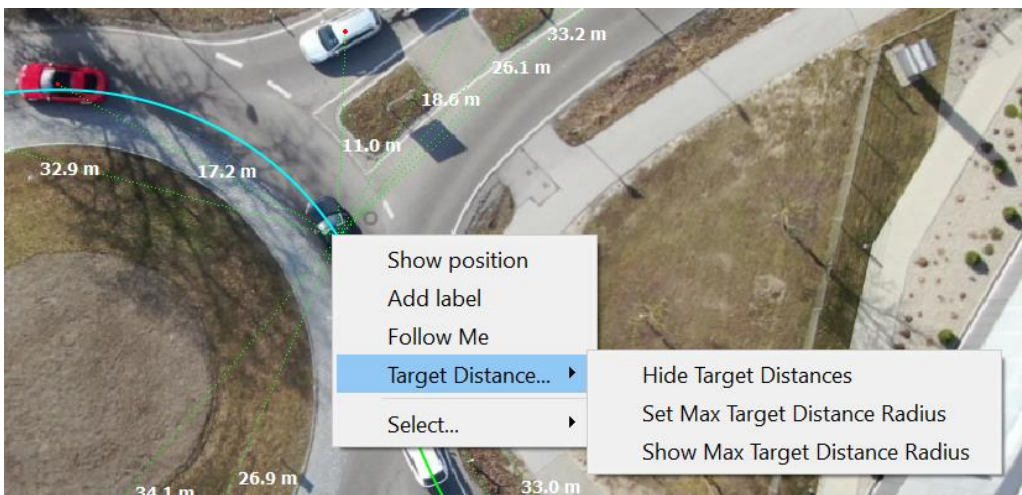
How to visualize objects and their interaction?

Display distance between objects or specific location within the video

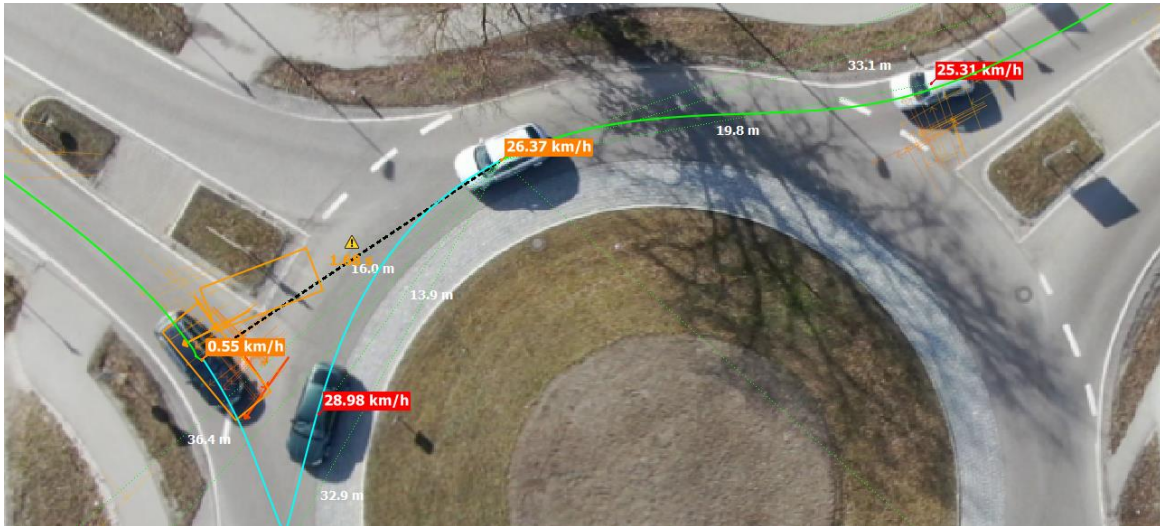
Display **distance** of an object from others based on your requirements, **measure distance** within the video or add a **note label** directly to the video. You can **export** all these features to video or snapshot export as well.



Set **maximal targeted distance radius** in a menu after right-click to chosen object and **see the distance** from other objects based on your parameter.



You can combine this feature with **safety analysis** to visualize distance between objects not only in seconds but in meters (or feet) as well.



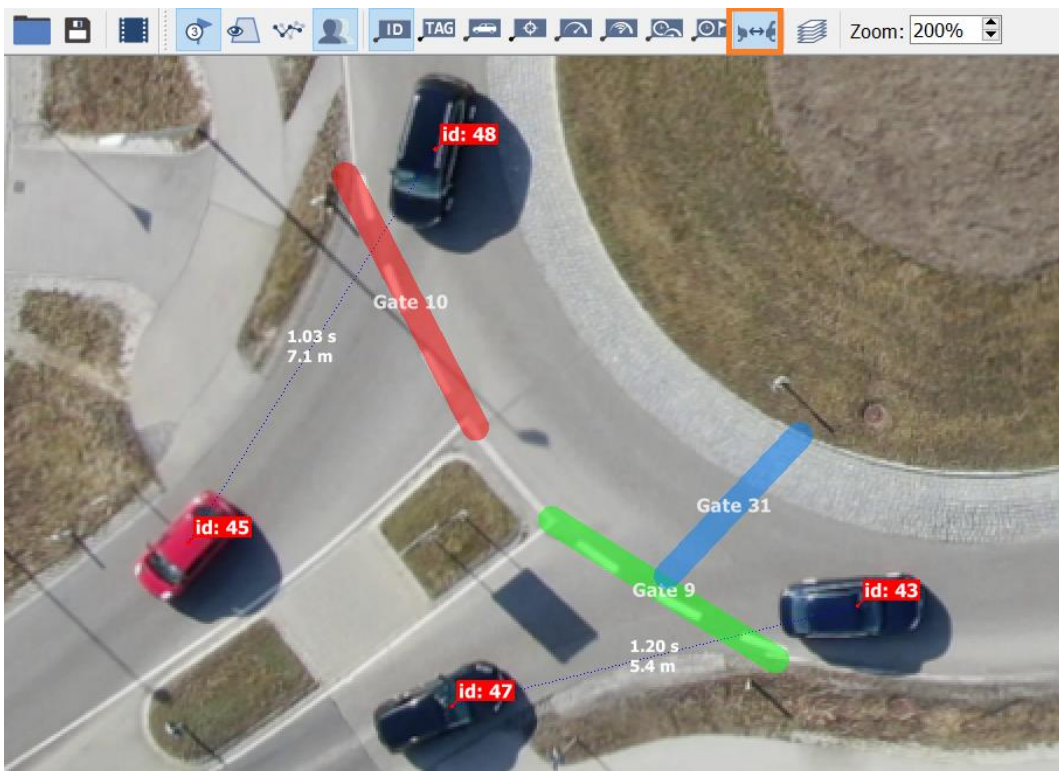
Are you looking for **exact position** of point or object within the video or **measuring distance between two or more points**? By right-click choose Show position. New **position label** within the video shows. This position might be shown in **UTM** or **WGS84** system (it is up to you). In case you insert more of these labels, you can see the **distance between** these labels as well.



In case you want to point out some important location in the video, you can **add your own notes** to the video. These notes will be visible in your visual **export**.



Are you curious what are **distances between objects**? Set your own gates within the video and choose Show Target Headways in the main menu. Distance (in seconds and meters) between vehicles that pass the same gate shows.



If you are looking for data export of interactions between objects see an article **How to set Gap Time and Time to Follow data?**