



SWISSTRAFFIC Group

Switzerland
France
Slovenia
Austria

SWISSTRAFFIC
we innovate mobility

SWIROO
WE INNOVATE MOBILITY

AI SWISSLIDAR AI



3D Spatial Intelligence - swissLIDAR AI is the perfect combination of a Lidar sensor and advanced software for the precise capture of the environment and advanced real-time processing of 3D data.

VEHICLE MONITORING AND ITS APPLICATIONS

- Multimodal traffic counting and precise identification of near-misses.
- Observation of vehicles and pedestrians to improve the safety of vulnerable road users.
- Monitoring of parking space occupancy for improved operational efficiency.
- Ready-to-use solutions for users (dashboard, KPIs, alerts) and an API.
- Intelligent software built with key building blocks to deliver value in a variety of applications.



DATA PRIVACY
COMPLIANT



WORKS IN ANY
LIGHTING CONDITIONS



CM-LEVEL
ACCURACY



SCALABLE IN
MANY APPLICATIONS



LARGE AREAS
COVERAGE



3D NATIVE
SPATIAL INSIGHT



IDEAL APPLICATION AREAS

Traffic flow optimization
Near misses
Multimodal counting
Parking management
Wrong-way drivers
Vehicle height
Object on the road
Onset/end of traffic jam



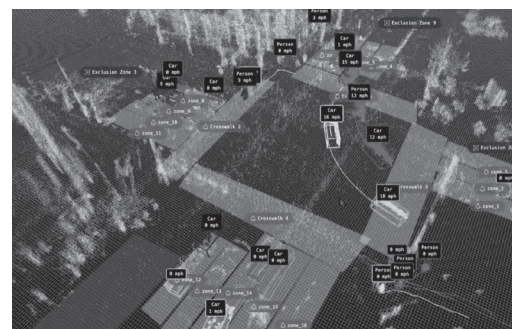
TECHNICAL FEATURES

Standard: 6 object classes
Optional: SWISS10
Highest precision (cm)
Extensive coverage
Data protection compliant
All lighting conditions
Real-time data
Personal dashboard

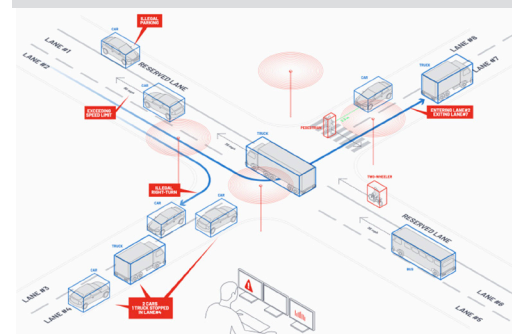


COMBINABLE PRODUCTS

swissDASHBOARD



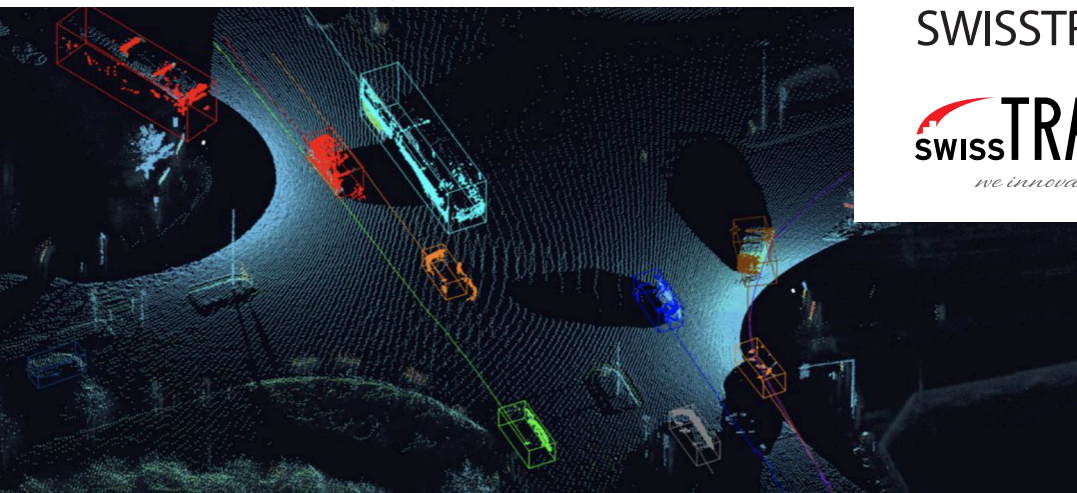
Multimodal real-time monitoring of an entire intersection with the highest precision (cm-accurate) and in compliance with data protection regulations.



Accurate vehicle sizes, distances and speeds. Pedestrians and cyclists are detected up to 90 meters away.

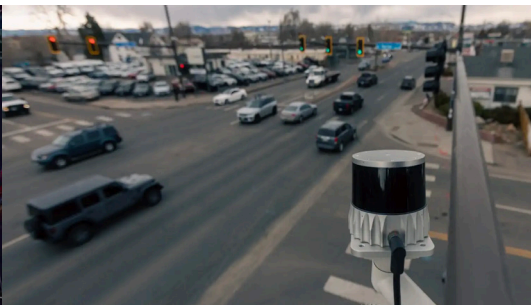
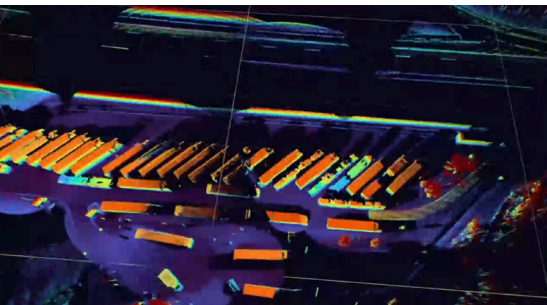


The dashboard displays real-time KPIs, such as the service level for various conditions.



SWISSTRAFFIC Group

Switzerland
France
Slovenia
Austria



Real-time detection of truck parking at motorway service areas.

Highest detection accuracy in all light and weather conditions.

LASER CLASS
CLASS 1 (EYE-SAFE)

LASER WAVELENGTH
865 NM

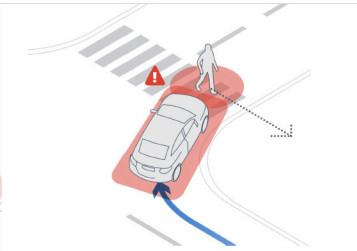
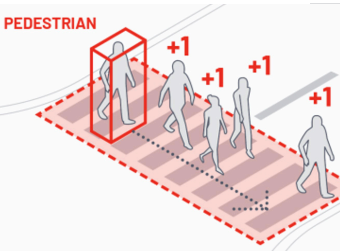
POWER CONSUMPTION
14 - 20 W (22 W PEAK AT STARTUP)

OPERATING VOLTAGE
9V - 34 V, 12 V OR 24 V NOMINAL

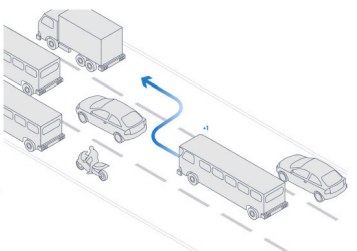
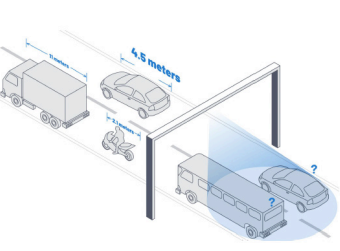
WEIGHT
400 G

OPERATING TEMPERATURE
-40 °C BIS +60 °C

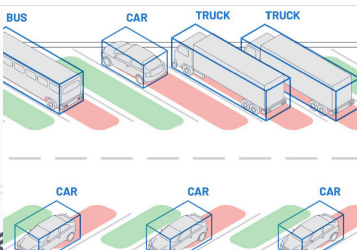
INGRESS PROTECTION
IP68



Pedestrian crossing
Counting, safe crossing, wrong crossing, pedestrian flow, near accident, alerting....



Street
Counting, vehicle classes, speeds, beginning and end of congestion, lane changes, wrong turns, vehicle height, wrong-way drivers, objects on the road...



Stopping zones
Parking management, unauthorised parking, stop bar, stop bar violation...

SMART MOBILITY SOLUTIONS
PRODUCT CATALOGUE



SWISSTRAFFIC Group

www.swisstraffic.ch
www.swiroo.com

Switzerland

Zurich
Ittigen
Lausanne
Brig
Sion

France

Paris

Slovenia

Ljubljana

Austria

Vienna