



How to visualize data in the video?

Visualize gates, regions, speed, position, stationary time and other information in your video!

Presenting your data by using video is sometimes much easier than showing Excel file with tons of numbers. Thanks to **SWISSTRAFFIC.ai Viewer** you can visualize all the information within the video and export the video to share it with others!

Choose different **track flags** that can be seen within the object in the video or visualize data through **different colour of trajectory, visualize gates and crossing data, traffic regions** that you have set or **apply speed, acceleration, stationary and other heatmaps** in your video!



Track Flags possibilities

Visualize any of following information in your video by using **track flags**!

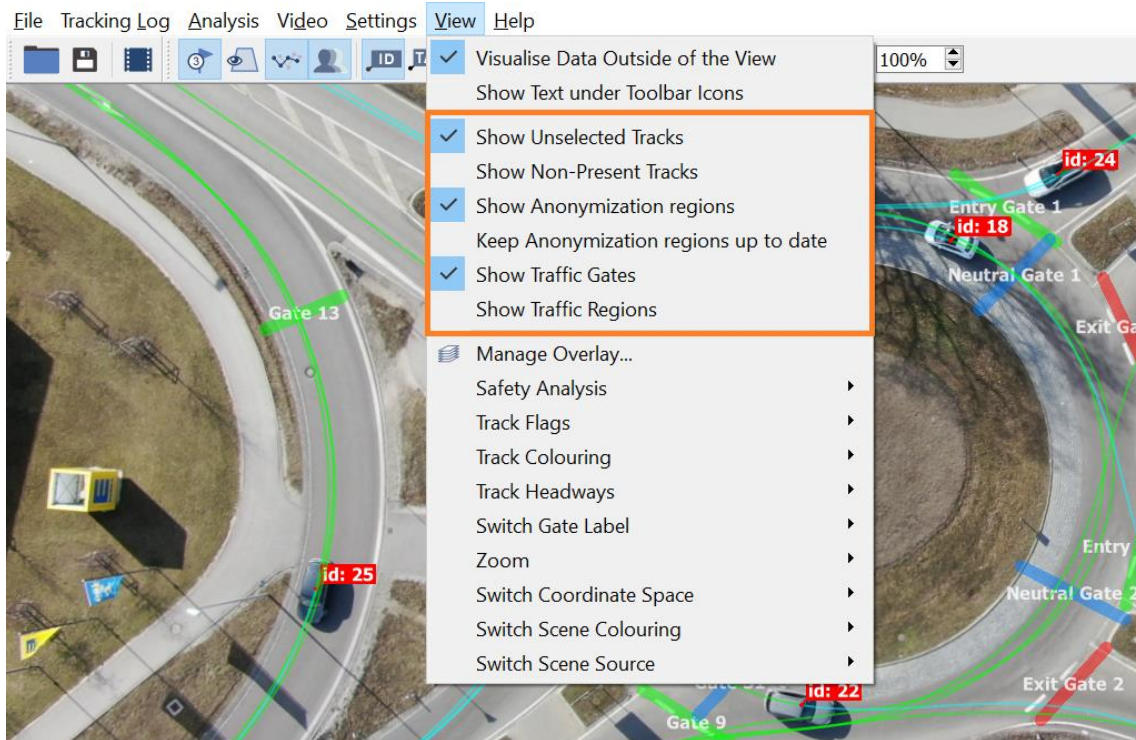
- **Traffic Gates** – See the article **How to set the gates** and **How to export gate data**.
- **Traffic Regions** – See information how to **Set traffic regions and export data**.
- **Show Unselected Tracks** – Decide whether you want to see trajectories of all objects within the video or only the objects that are visible at that moment.

- **Show Anonymization regions** – Anonymization region is used to make part of the whole video blurry, so objects cannot be recognized. See article about the **Anonymization region** for more information.
- **Show Target IDs** – Display Flags with the relevant object IDs.
- **Show Target Speeds** – Display the Flag with the Speed of the object.
- **Show Target Accelerations** – Display the Flag with current acceleration of the object.
- **Show Target Types** – Display the Flag with the object Type.
- **Show Target Positions** – Shows the current position of the object (we do support UTM and WGS 84 systems)
- **Show Target Stationary times** – Define stationary time of the vehicle and visualize stationary vehicles within the video.
- **Show Target Times from Last Gate** – Time from the last passed gate.
- **Show Unselected Tracks** – If this box is checked (default), only the Trajectories of the objects currently in the image are displayed, the button for this function is also located on the Main Toolbar.
- **Show Non-Present Tracks** – You will be able to see all tracks within the whole duration of the video.
- **Keep Anonymization regions up to date** – If this field is unchecked (Default), the Anonymization region field will not be refreshed and will display only the still image. If this field is checked, the Anonymization region field will be refreshed and will display a blurred image. See article **Anonymization region** for more information.
- **Show Video** – Show video in the background
- **Safety Analysis** – Set whether to display detected conflicts in the scene view. See the article how to use Safety Analysis.

You can easily visualize one or more of this information within the video by clicking to icons in main toolbar.



Or you can find them in a main menu, section **View**.



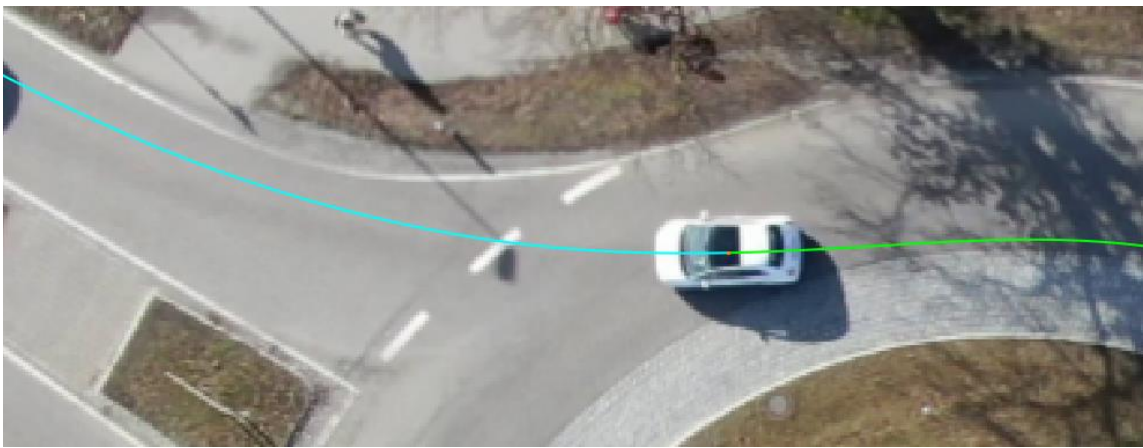
See the **example** of visualization of some **Track Flags**



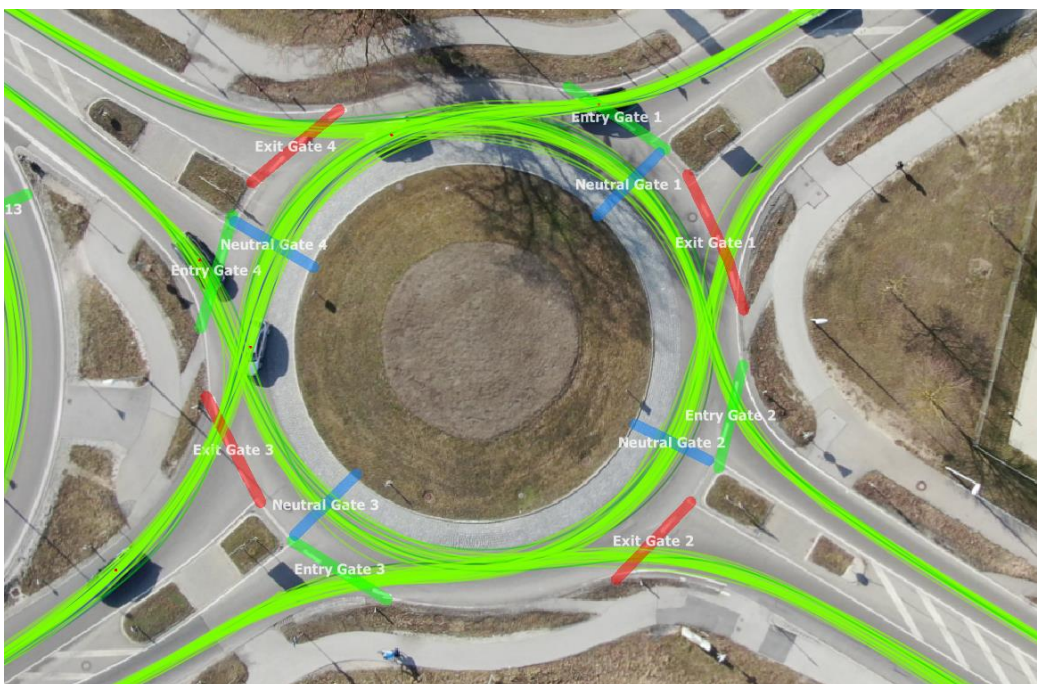
Track Colouring possibilities

Track Colouring – This menu allows you to change the colour of the track relative to the Type, Speed or Direction of the track. You can also check the option to Apply Colouring For Track Flags, after which the flags will be coloured according to the type or direction of the object.

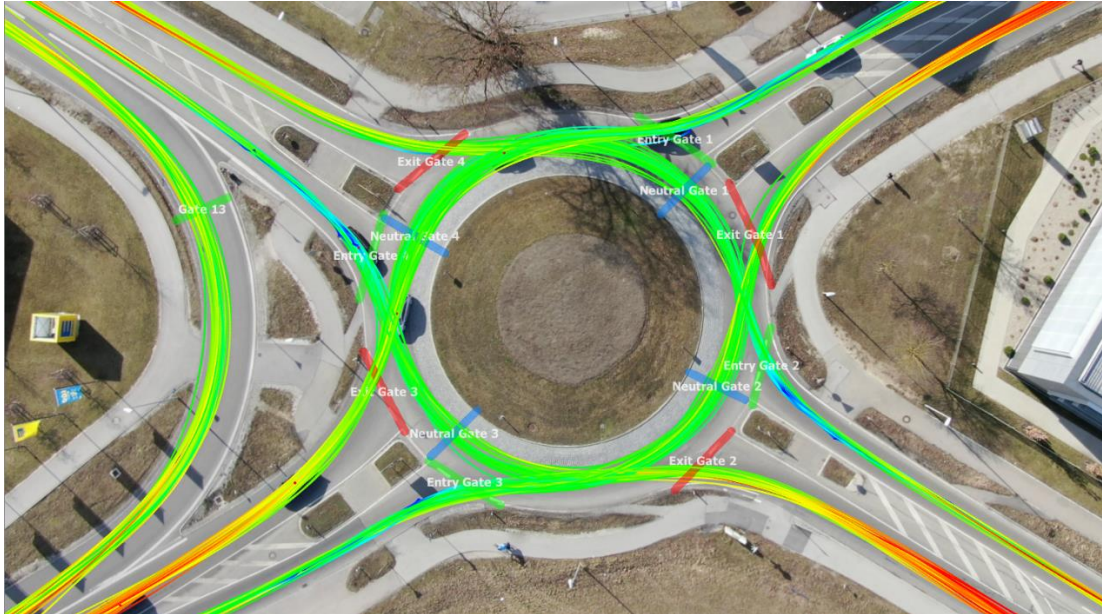
Default Colouring – The Trajectory line is double coloured; green colour represents already travelled part of trajectory and blue colour represents the part of trajectory that is to be travelled.



Type Colouring – Sets Track Colour according to object type.



Speed Colouring – Set your own range of speed, based on that you can visualize speed of vehicles through colour of their trajectory.

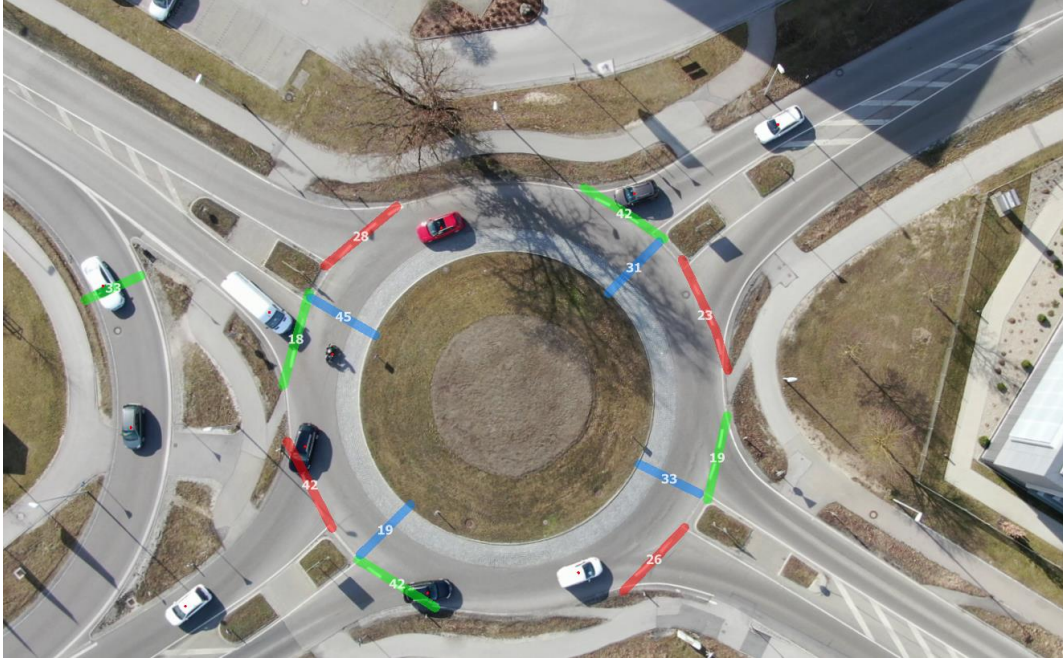


Direction Colouring – If you select this setting, you can select the desired colour for each direction in the Set Track Colours for Directions setting. Gates must be inserted for this setting to function properly.



Gate Label possibilities

Use the possibility to set gate label. You can choose between: **Gate Tags**, **Gate IDs** or **see actual gate crossing number!**



You can visualize data for safety analysis as well! See the article about **Safety analysis and its exports**. If you want to visualize data through heatmaps, see our article **How to work with Heatmaps**.